

2008 Buying Guide

St. Genevieve Catholic School #552
Livonia, MI

Look Inside:

**2008
Lower Prices**

**Coming Soon
June 2008**

**Updated
Website**

**New Features
at schoolbelles.com**

**Pre-register for
streamlined
check-out
Online Discounts**

**Great News!!
New longer Summer Retail Hours!
See back cover.**

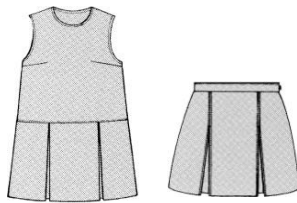
Phone Orders: 1.888.637.3037 • Online Orders: schoolbelles.com



**Girls' Program
Gr. 1-8**

**St. Genevieve Catholic School
Livonia, MI 0552**

Style 1421



Style 1521

NOTE: Jumpers and skirts must be knee length. Mandatory for Mass Days.

JUMPERS/SKIRTS				
STYLE	DESCRIPTION		PRICE	GRADE
1421	Drop waist shift jumper	4-20, 6T-12T, 6X-20X	\$38.25	1-5
STYLE	DESCRIPTION		PRICE	GRADE
1521	2-Kick pleat skirt	4-20, 2-16P, 6X-20X, 5-17J	\$38.00	6-8

Color: 193-navy/white/green plaid

BLOUSES					
STYLE	DESCRIPTION		4-16	SA-3XLA	GRADE
1739	Short sleeve round collar blouse	Lower Prices 2008 →	\$11.95	\$13.45	1-5
1740	Long sleeve round collar blouse		\$12.95	\$14.25	1-5
STYLE	DESCRIPTION		5-16	XSA-3XLA	GRADE
1770	Short sleeve oxford blouse		\$16.95	\$21.25	6-8
1771	Long sleeve oxford blouse		\$18.95	\$23.25	6-8

Color: 17-white

KNIT SHIRTS					
STYLE	DESCRIPTION		XXS-XLY	SA-3XLA	GRADE
5705	Short sleeve pique knit shirt		\$17.90	\$22.20	1-8
5706	Long sleeve pique knit shirt		\$19.60	\$23.90	1-8

Color: 17/552-white with school monogram

NOTE: Must be worn with blouse or monogrammed polos.

SLACKS							
STYLE	DESCRIPTION		7-16 S/R	6X-18X	1J-27J	GRADE	
3264	Mid-rise slack	Lower Prices 2008 →	\$24.95	\$25.95	\$27.95	1-8	
STYLE	DESCRIPTION			4-6XR	7-16R/S	6X-18X	3J-27J
3266	Pleated front slack	Lower Prices 2008 →	\$19.95	\$21.95	\$22.95	\$24.95	1-8

Color: 15-navy twill

NOTE: To be worn August through September and May through June. Length must be worn to the knee.

WALKING SHORTS							
STYLE	DESCRIPTION		7-16 S/R	6X-18X	1J-27J	GRADE	
3277	Mid-rise short		\$21.55	\$22.60	\$24.65	1-8	
STYLE	DESCRIPTION		4-6XR	7-16R/S	6X-18X	3J-27J	GRADE
3267	Girls' pleated front walking short	Lower Prices 2008 →	\$14.95	\$16.95	\$17.95	\$19.95	1-8

Colors: 15-navy twill

GIRLS' & BOYS' ACCESSORY OPTIONS

NOTE: Sweaters must be purchased from Schoolbelles.

SWEATERS					
STYLE	DESCRIPTION		XXS-XLY	SA-3XLA	GRADE
1994	V-Neck sweater vest		\$22.25	\$28.50	1-8
5912	V-Neck cardigan sweater		\$28.35	\$34.75	1-8

SWEATSHIRTS					
STYLE	DESCRIPTION		SY-XLY	SA-3XLA	GRADE
2056	Monogrammed sweatshirt		\$19.80	\$22.85	1-8

Colors: 15/552-navy with school monogram (Grades 1-5); 24/552-red with school monogram (Grades 6-8)



SOCKS			TIGHTS		BUY 3 AND SAVE \$1 Same Size/Style	
Style		Price	Style	Description		Price
1601	Cable acrylic knee-high	\$ 3.50	1603	Opaque tights	Youth	\$ 4.75
1602	Cotton knee-high	\$ 3.75	1603	Opaque tights	Adult	\$ 9.95
1605	Opaque nylon knee-high	\$ 3.50	1633	Heavy weight ribbed tights	Youth	\$ 8.75
1621	Pima cotton knee-high	\$ 3.95				
1650	Turn cuff sock	\$ 2.95				
1653	Cotton crew sock	\$ 3.35				
1655	Triple roll sock	\$ 3.35				

Color: 15-navy, 17-white

Toll-Free Phone Orders 1-888-637-3037

Rev Date: 8/14/2008

**Boys' Program
Gr. 1-8**

**St. Genevieve Catholic School
Livonia, MI 0552**

TROUSERS

STYLE	DESCRIPTION	4R-7R/S	8R-16R/S	25H-38H	27P-32P	33-44M	GRADE
5202	Plain front trouser	\$18.95	\$21.50	\$25.50	\$24.95	\$26.95	1-8
5203	Pleated pant trouser	\$18.95	\$21.50	\$25.50	\$24.95	\$26.95	1-8

Colors: 15-navy twill

Lower Prices 2008

NOTE: To be worn August through September and May through June. Length must be worn to the knee.

WALKING SHORTS

STYLE	DESCRIPTION	4R-7R/S	8R-16R/S	25H-38H	27-32 P	33-44 M	GRADE
3268	Boys' pleated front walking short	\$14.95	\$16.95	\$17.95	\$19.95	\$21.95	1-8

Colors: 15-navy twill

Lower Prices 2008

3282	Plain front short	N/A	\$18.95	\$19.25	\$20.95	\$21.95	1-8
------	-------------------	-----	---------	---------	---------	---------	-----

Colors: 1015-navy torino

Lower Prices 2008

NOTE: Must be worn with navy tie.

DRESS SHIRTS

STYLE	DESCRIPTION	4-20	10H-20H	SA-2XLA	GRADE
5703	Short sleeve dress shirt	\$15.25	\$18.25	\$20.35	1-8
5704	Long sleeve dress shirt	\$17.25	\$20.35	\$22.45	1-8
5760	Short sleeve oxford shirt	\$17.25	\$20.25	\$22.50	1-8
5761	Long sleeve oxford shirt	\$19.25	\$22.50	\$24.50	1-8

Colors: 17-white

SCHOOL
MONOGRAM



St. Genevieve
School

KNIT SHIRTS

STYLE	DESCRIPTION	XXS-XLY	SA-3XLA	GRADE
5705	Short sleeve pique knit shirt	\$17.90	\$22.20	1-8
5706	Long sleeve pique knit shirt	\$19.60	\$23.90	1-8

Colors: 17/552-white with school monogram

TIES

Style		Price
9590	Zipper pre-tied tie	\$13.65
4890	Pre-tied tie	\$7.45
4827	Four in hand tie	\$7.45

Color: 15-navy

BELTS

Style	Description	Price
6308	Elastic belt	\$8.50
6309	Narrow leather belt	\$11.75
6310	Braided leather belt	\$9.00
6315	Elastic belt with magnetic buckle	\$6.15

Color: 22-black

GIRLS' & BOYS' GYM WEAR PROGRAM

NOTE: Gym wear may be worn to school on gym day.

T-SHIRT

STYLE	DESCRIPTION	XSY-LY	SA-3XLA	GRADE
2020	T-shirt	\$7.05	\$8.05	1-8

Colors: 15/552-navy with school logo

GYM LOGO



SHORTS

STYLE	DESCRIPTION	XSY-LY	SA-3XLA	GRADE
2062	Micro-mesh short	\$14.65	\$16.30	1-8
2069	Jersey short	\$10.20	\$11.25	1-8

Colors: 15/552-navy with school logo

SWEATPANTS

STYLE	DESCRIPTION	XXSY-XLY	SA-3XLA	GRADE
2040	Traditional sweatpant	\$14.85	\$17.90	1-8

Colors: 15-navy

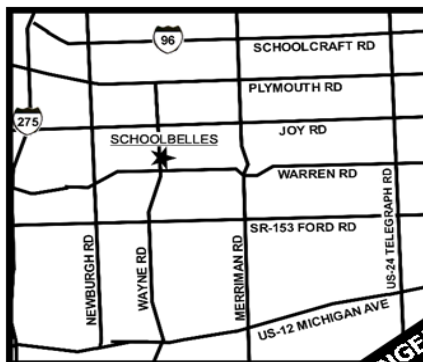
SWEATSHIRTS

STYLE	DESCRIPTION	SY-XLY	SA-3XLA	GRADE
2050	Sweatshirt	\$17.35	\$20.40	1-8

Colors: 15/552-navy with school logo

Visit the Schoolbelles store near you!

Schoolbelles Uniforms - Westland, MI
"Westland Crossing Plaza"
 34770 Warren Road, #19
 Westland, MI 48185
 734.522.0829



Regular Store Hours:

Sunday & Monday	Closed
Tuesday	10am - 5pm
Wednesday	12pm - 5pm
Thursday	12pm - 7pm
Friday & Saturday	10am - 4pm

Summer Store Hours: (July 14 - September 13)

Sunday	Closed
Monday - Thursday	10am - 7pm
Friday & Saturday	10am - 5pm

*Closed all major holidays, as well as Good Friday and Holy Saturday
 (Please call ahead for hours)

Questions? Comments? Suggestions? Order Forms?

We care and want to hear what you think. Just Call, Click or Write.

Call Customer Service at 1-888-637-3037.

Monday - Friday; 9am - 4:30pm (EST)
 From July 28 to September 5, Monday - Friday; 9am - 5pm (EST)
 Also open Saturdays in August 2 - 23; 9am - 2pm (EST)

Click on www.schoolbelles.com and select "Contact Us".

Write to: Schoolbelles Headquarters
 4747 West 160th Street
 Cleveland, OH 44135

***Each remittance of payment by check is considered authorization to convert that particular check into an immediate electronic fund transfer from your checking account.**

